



# LFP

Large Format Printing

 ergosoft



Welcome to the software solution  
for today's print service provider.

**Welcome to Ergosoft.**



# Prepress production tools for **Large Format Printing**

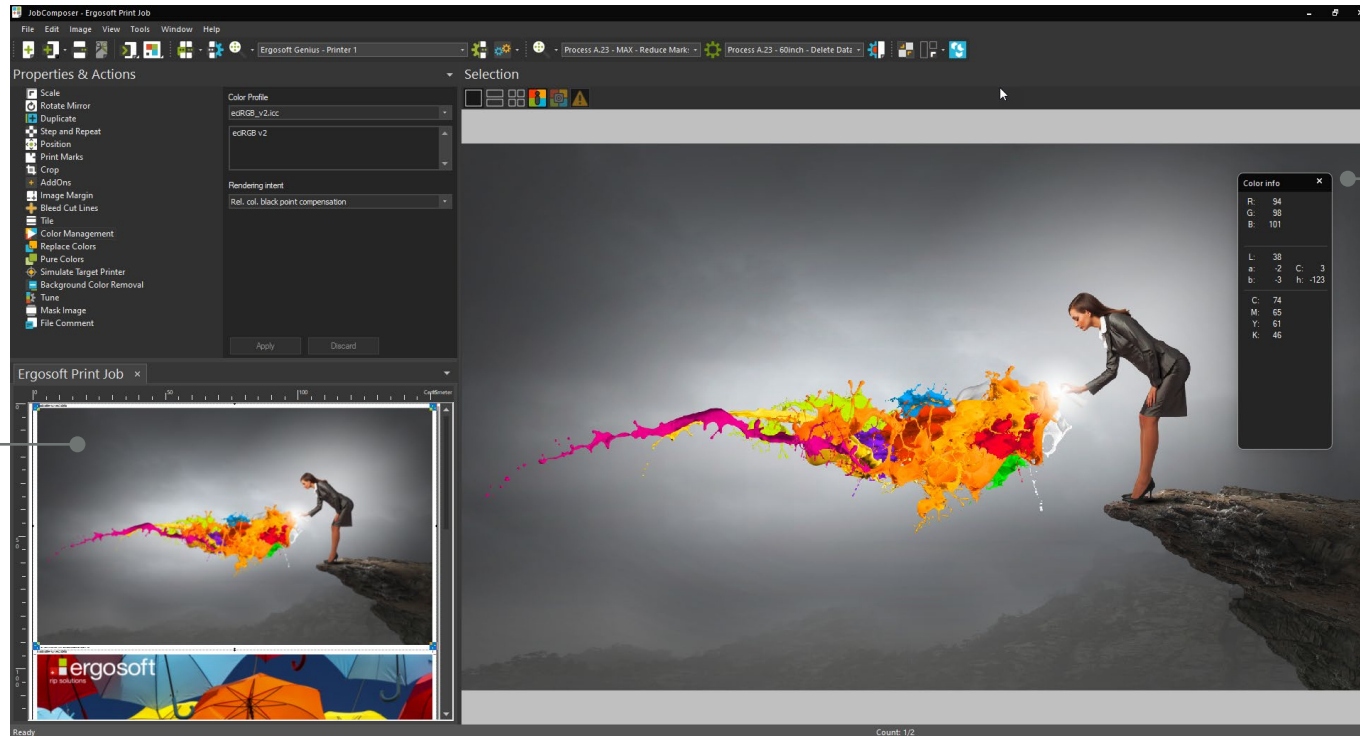
Ergosoft software has been designed to help large format printers prepare jobs faster and more efficiently.

It provides tools to reduce manual work, lost time, and wasted media while improving color consistency and productivity.

Whether you have one printer or many, Ergosoft's scalable software can deliver a solution to suit your requirements.

# Pre-flight render to check customer files

## Ergosoft JobComposer



**Catch problems early**

Catch any problems in files before printing, saving lost production time, and wasted media and ink.

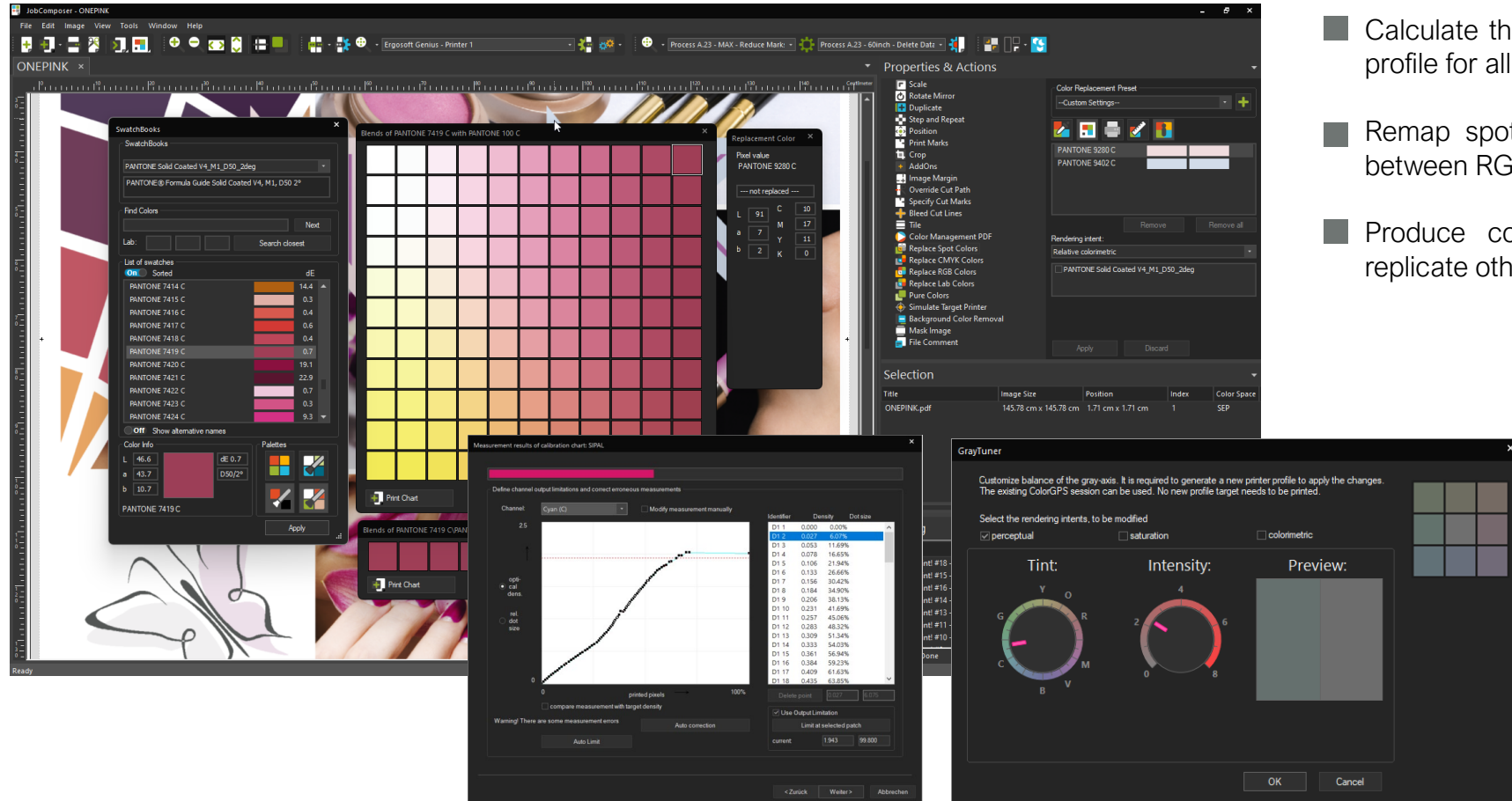
**Accurate Preview**

The JobComposer gives an accurate preview of how the file will print.

JobComposer supports all common artwork formats from Adobe Photoshop (PSD) and Adobe Illustrator (AI), TIFF, BMP, PNG, JPEG, EPS, Postscript, and PDF files.

# Professional color management tools

## Ergosoft JobComposer



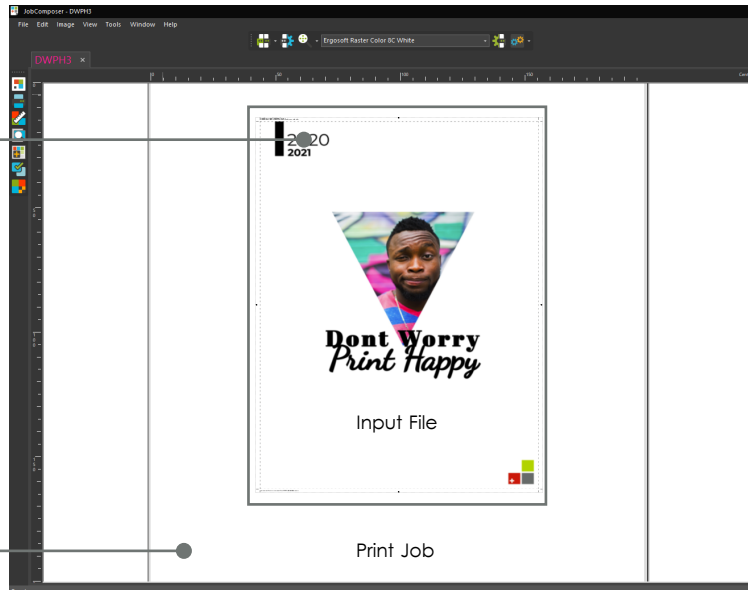
- Calculate the best ink density, printer linearization, and ICC profile for all of your printers.
- Remap spot colors, apply ICC profiles, and easily switch between RGB and CMYK color spaces.
- Produce consistent color across all your printers and replicate other systems' output.

- **ColorGPS Profiling Suite**
- **Density Linearization**
- **InkLimit**
- **ColorEqualizer**
- **SwatchMatcher**
- **SwatchBook**

The Density Linearization & ColorGPS Profiling Suite creates the most accurate printer calibration and media profiles possible. The easy-to-use wizards guide you to perfect grey balance and optimized ink consumption.

# Automate prepress with Presets & Composite Presets

## Ergosoft JobComposer



### ImagePresets

Save all individual settings of an image as “Presets” and combine them into an “ImagePreset”.

Load the next image, apply the “ImagePreset” and Print!

### JobPresets

Save all individual settings of a Job as “Presets” and combine them into a “JobPreset”.

Load the next Job, apply the “JobPreset” and Print!

### Composite Preset

Ergosoft enables you to combine ImagePresets and JobPresets into Composite Preset to minimize time spent in individual image editing and preparation.

- Ergosoft allows prepress operators to apply a series of processes (called Properties and Actions) to prepare jobs quickly and efficiently.

In seconds, files can be scaled, cropped, tiled, and nested. Contour-cut paths and bleeds can be created at the click of a mouse.

Actions can be saved for use again and again. We call these Presets.

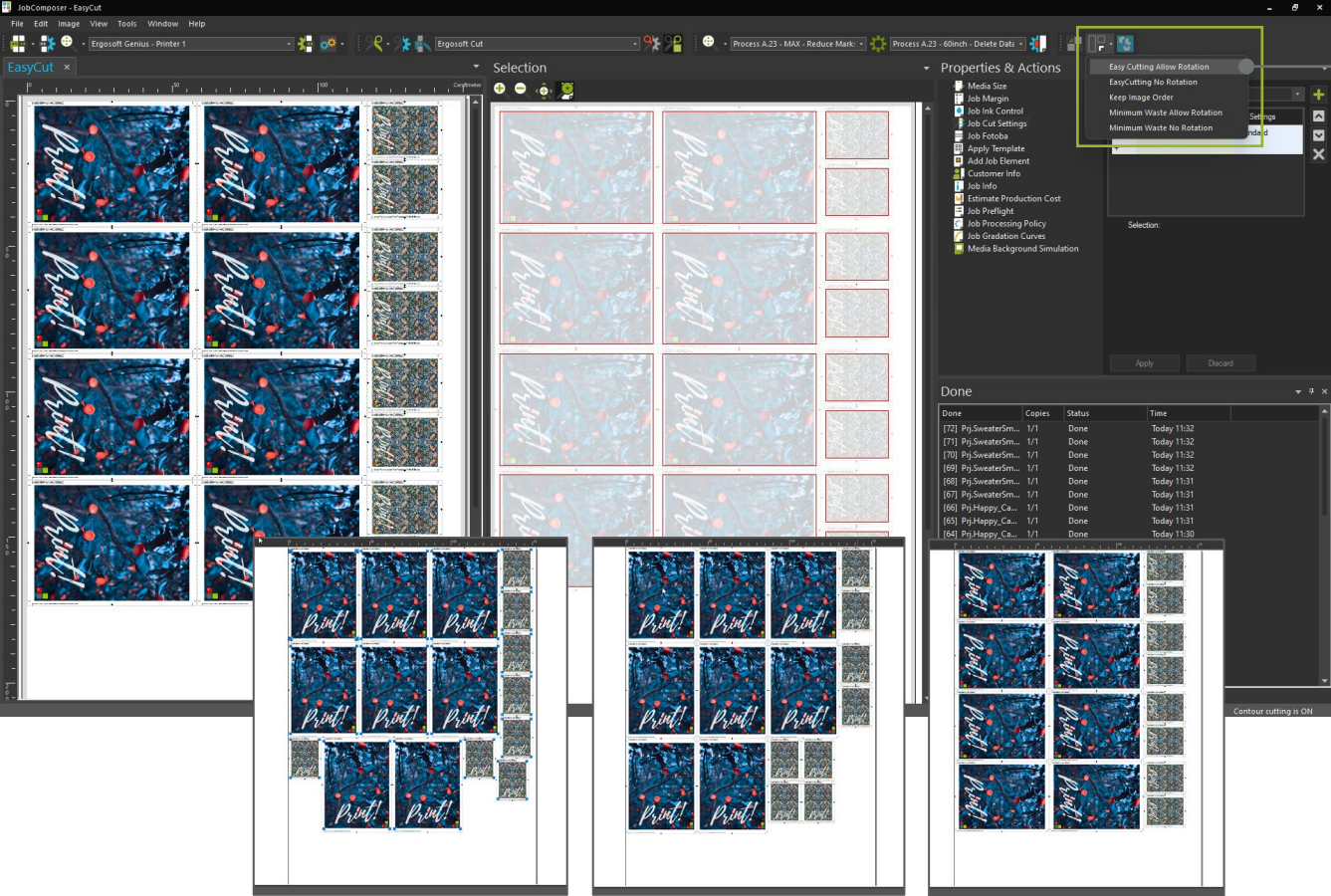
Ergosoft Presets can be connected for more complete workflows, dramatically reducing manual work.

- Composite Presets allow you to connect a series of Actions into a single process to replicate prepress production.

Scaling, adding seams, eyelets, barcodes, cropping to a pre-defined size, or calculating cut contours are just some of the tasks that can be automated with Ergosoft Composite Presets.

# Automatically nest files to save media

## Ergosoft JobComposer



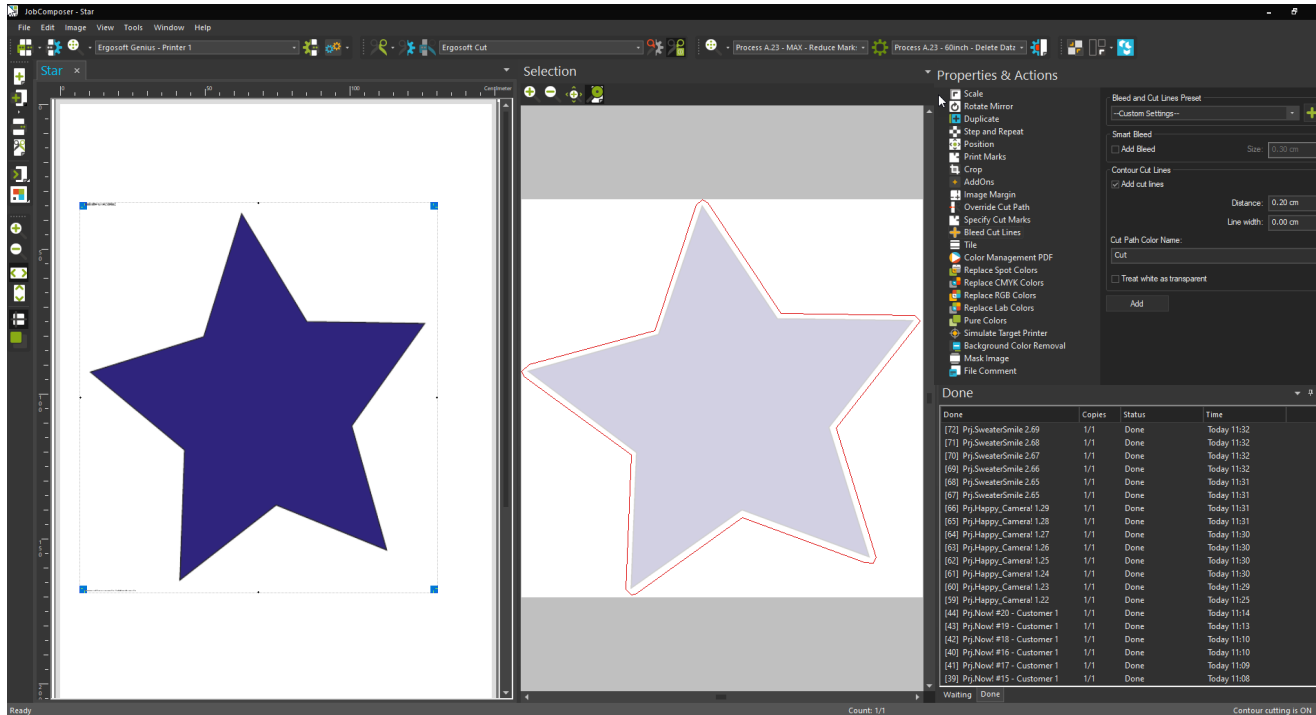
Our nesting algorithm calculates the most efficient use of media, places your files in the correct place, and produces print and cut files without manual calculations. You can add as many jobs as necessary to get the best use of media, and you can add them right up to the last second.

Thanks to Ergosoft Presets, print marks, barcodes, job labels and more can be added at the same time so your job is processed with very little manual work, helping you to save time and media.



# Automatically create complex cut paths

## Ergosoft JobComposer



Realtime, High Resolution  
WYSIWIG Preview

Cut Path Generation and  
Preview

- Creating cutting paths in desktop applications can be difficult and time-consuming.

Fortunately, thanks to the automatic settings in Ergosoft, complex cut paths are fast and easy to make. Define the cut path parameters, and the software takes care of the rest.

- Cut path parameters can also be saved as Presets so that future jobs can be prepared without manual processing.
- With Ergosoft, you can work with several cut paths per image and assign them easily to different tools (Thru-cut, Kiss-cut, Pen, ...)



# Nest odd-shaped files

## Ergosoft JobComposer

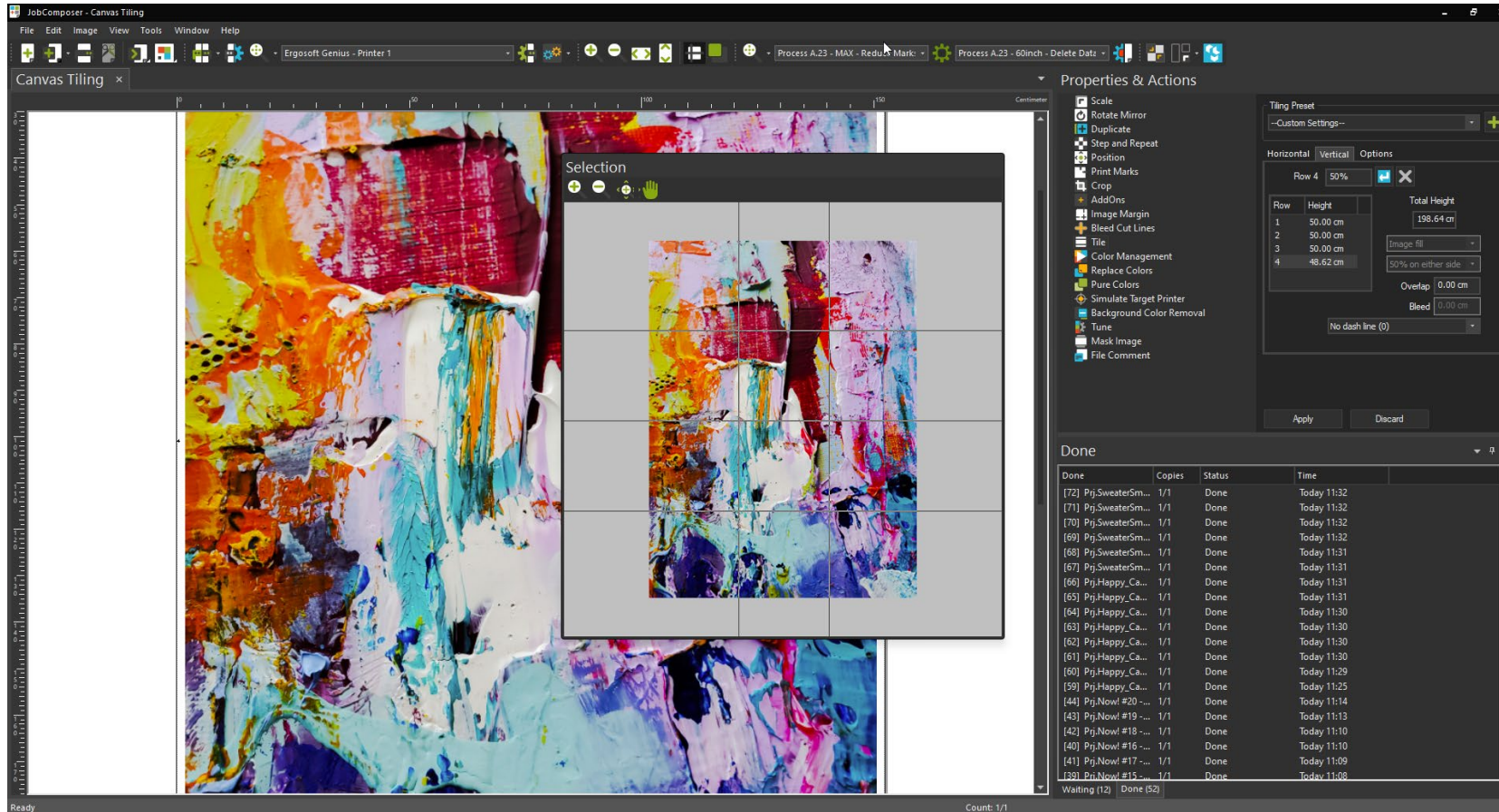
The screenshot shows the Ergosoft JobComposer interface. The main workspace displays a grid of blue star-shaped files on a white background. A 'True Shape Nesting' dialog box is open, showing a list of files and nesting options. The dialog box includes a table of files, nesting options (Angles: 90, Space: 0.50 cm), fill options (Fill Space), and cut options (Add Bleed, Add cut lines, Distance: 0.20 cm, Line width: 0.00 cm). Below the main workspace, two smaller windows show the 'Before' and 'After' nesting results. The 'Before' window shows a grid of stars with significant white space between them. The 'After' window shows the stars nested together, significantly reducing the white space and maximizing the use of the page.

Image Size	Position	Index	Color Spa
17.60 cm x 25.00 cm	1.51 cm x 1.51 cm	1	SEP
17.60 cm x 25.00 cm	22.12 cm x 1.51 cm	2	SEP
17.60 cm x 25.00 cm	42.74 cm x 1.51 cm	3	SEP
17.60 cm x 25.00 cm	63.36 cm x 1.51 cm	4	SEP
17.60 cm x 25.00 cm	83.97 cm x 1.51 cm	5	SEP
17.60 cm x 25.00 cm	104.59 cm x 1.51 cm	6	SEP
17.60 cm x 25.00 cm	125.21 cm x 1.51 cm	7	SEP
17.60 cm x 25.00 cm	1.51 cm x 29.52 cm	8	SEP

- Ergosoft's true shape nesting analyses the edges of your files and calculates the best way to fit odd-shaped files on your printer, minimizing media waste while maximizing profit margins.
- By incorporating Ergosoft's automatic bleed generation and cut contour functions as part of a Preset workflow, jobs are produced instantly and accurately, saving hours of prepress time.
- Files can be added and nests recalculated as many times as necessary to make sure you use every last centimetre of your media.

# Easily tile very large jobs

## Ergosoft JobComposer

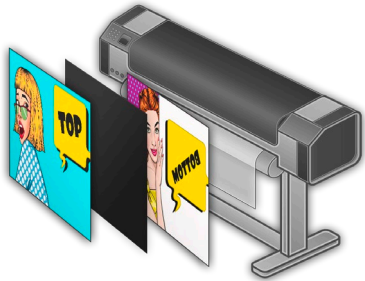


Original artwork by Jené Stephaniuk at jenegallery.com

- Ergosoft's fast tiling simplifies the production of print for very large areas such as building wraps, wall coverings, retail displays and exhibition stands.
- Load pre-defined tiling Presets, or make new ones directly in JobComposer and save them for future use.
- Ergosoft's RIP engine will take care of image scaling, bleeds, overlaps and cut paths so you don't have to think about it.
- Fast tiling, and simple print and cut thanks to Ergosoft Presets.

# Easily print double sided

## Ergosoft JobComposer



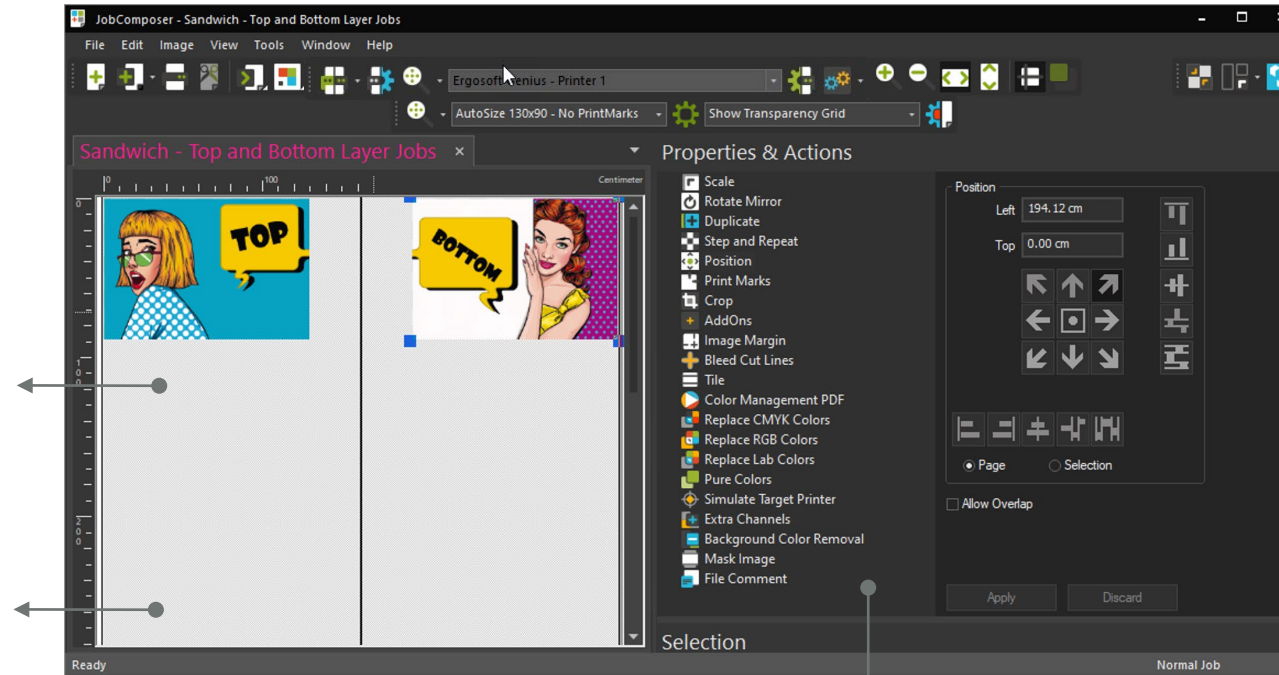
### Advanced "Sandwich" Modes

- Create sophisticated "double-sided" jobs using maximum JobComposer functionality for all images and layers.
- Manage multiple images per job.



### Custom White Preview

- Select a custom color to preview white areas during the composing process.



Realtime, High Resolution  
WYSIWG Preview

- Using Presets for scaling, positioning, and white channel generation speeds up the production process by removing the need for manual prepress work and removing the potential for errors. You can save these Presets for the next job to save even more time.

- Ergosoft makes double-sided and sandwich printing easy. Simply select the correct print environment and the double-sided printing option appears automatically.
- The Ergosoft Print Environment will ensure the sandwich print is processed in a single pass, so you don't have to think about anything.

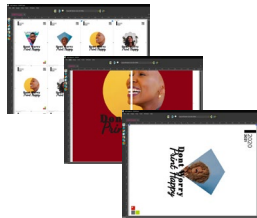
# Print and cut on any device

## Ergosoft JobComposer



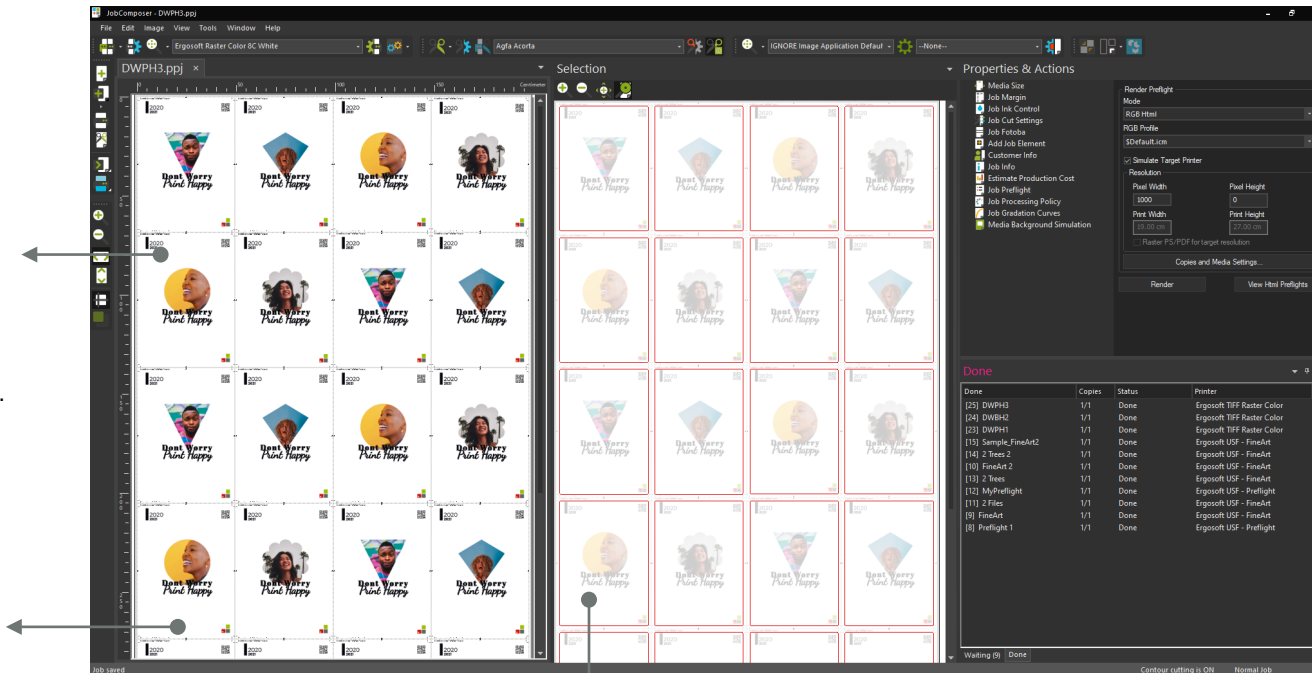
### Realtime Image Editing:

- AddOns (e.g. QR Codes)
- Generate Bleed & Cut Lines
- Crop, Scale, Tile, Rotate, etc.
- Replace Colors
- And many more...



### Realtime Job Composing:

- Realtime Image Positioning
- Image Nesting
- Job Preflight
- And many more...



Realtime, High Resolution WYSIWG Preview

Cut Path Generation and Preview

Access to Queues



### Cut

- Multiple Cut Paths per Image
- Generate Cut Paths from Image Data
- Cut Image Border
- Job Cut Presets
- Individual Image Settings

- Ergosoft takes care of managing all your devices from a single interface.
- Switching to a new printer or cutter is simple; switch the Print or Cut Environment in the JobComposer application, and your job is updated immediately.
- All it takes is a single command to print and cut the job, and you can track the progress in the Print Queue Manager without having to leave your seat.



# Full control over your fleet

## Ergosoft QueueManager (complete JobQueue)

### Custom Filter, Search

Create custom filters and have them available as preset for fast filtering of the complete JobQueue.

Use the text search to find specific jobs easily.

The screenshot displays the Ergosoft QueueManager interface. On the left, a 'Done' tab shows a list of completed jobs with columns for ID, Name, Copies, Status, and Time. On the right, a 'Print' tab shows a list of jobs in progress or waiting, with columns for ID, Name, Copies, Status, and Printer. A 'Job Details' window is open, showing information for a specific job, including its ID, Name, Created date, Owner, Copies, Job Size, Media Size, Print Environment, Printer, Spool File, Status, Rip Progress, and Printed status. Below the job details, a 'Job Preview' window shows a preview of the printed job, which is a 'Dont Worry Print Happy' logo. At the bottom, a 'Print/CutQueue' window shows a table of jobs in the queue, with columns for Print/CutQueue, Online, Media, Width, Job, and Print Ma.

### JobDetails, Preview

Easily identify a job via preview. Review production details and production journal.

### Production Overview

The fully customizable QueueManager allows you to show and filter the complete JobQueue. Manage even large production queues with the tabbed view feature.



