



SUBLIMATION

Fashion

 ergosoft



Welcome to the software solution
for today's print service provider.

Welcome to Ergosoft.



Prepress production tools for **Sublimation**

Ergosoft RIP stands out as the Sublimation printing solution for digital textile and large format printers.

It efficiently minimizes manual labor, saves valuable time and media, and optimizes color consistency and productivity.

With its scalable design, Ergosoft is highly adaptable to your specific requirements.



Prepress production tools for **Sublimation**

Ergosoft is a modular system that makes the preparation, color management, and printing of files easy. Everything that is needed to produce work is supplied.

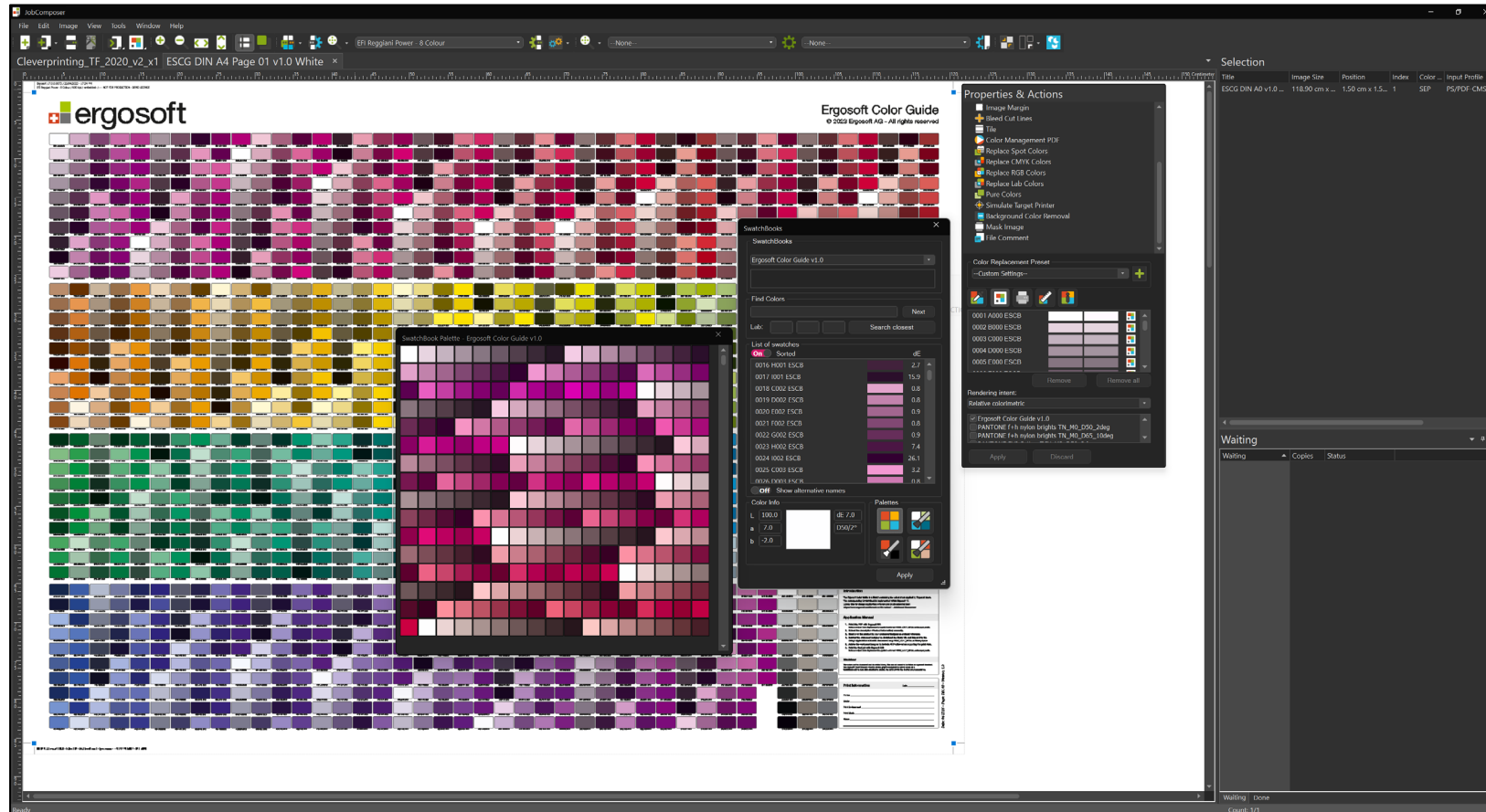
It provides all the necessary tools for creating exceptional work. Our feature extensive solution is well-suited for all different applications on digital printing devices.

Ergosoft enables users to work with a variety of artwork formats, including Adobe Photoshop (PSD) and Adobe Illustrator (AI), TIFF, BMP, PNG, JPEG, EPS, Postscript, and PDF files.

Swatch Matching

Ergosoft's **SwatchBook** and **SwatchMaker** tools create a swatch for the colors being printed along with a range of 'nearest colors' on the actual substrate being used.

Textile swatches give customers something they can see and feel and are just like the final product, increasing customer confidence by removing color mismatch.



SwatchBooks

Use the Ergosoft Color Guide, the included Pantone color database, or make your own custom SwatchBooks and share these with your designers or customers as a compatible swatch book for use in Adobe™ applications

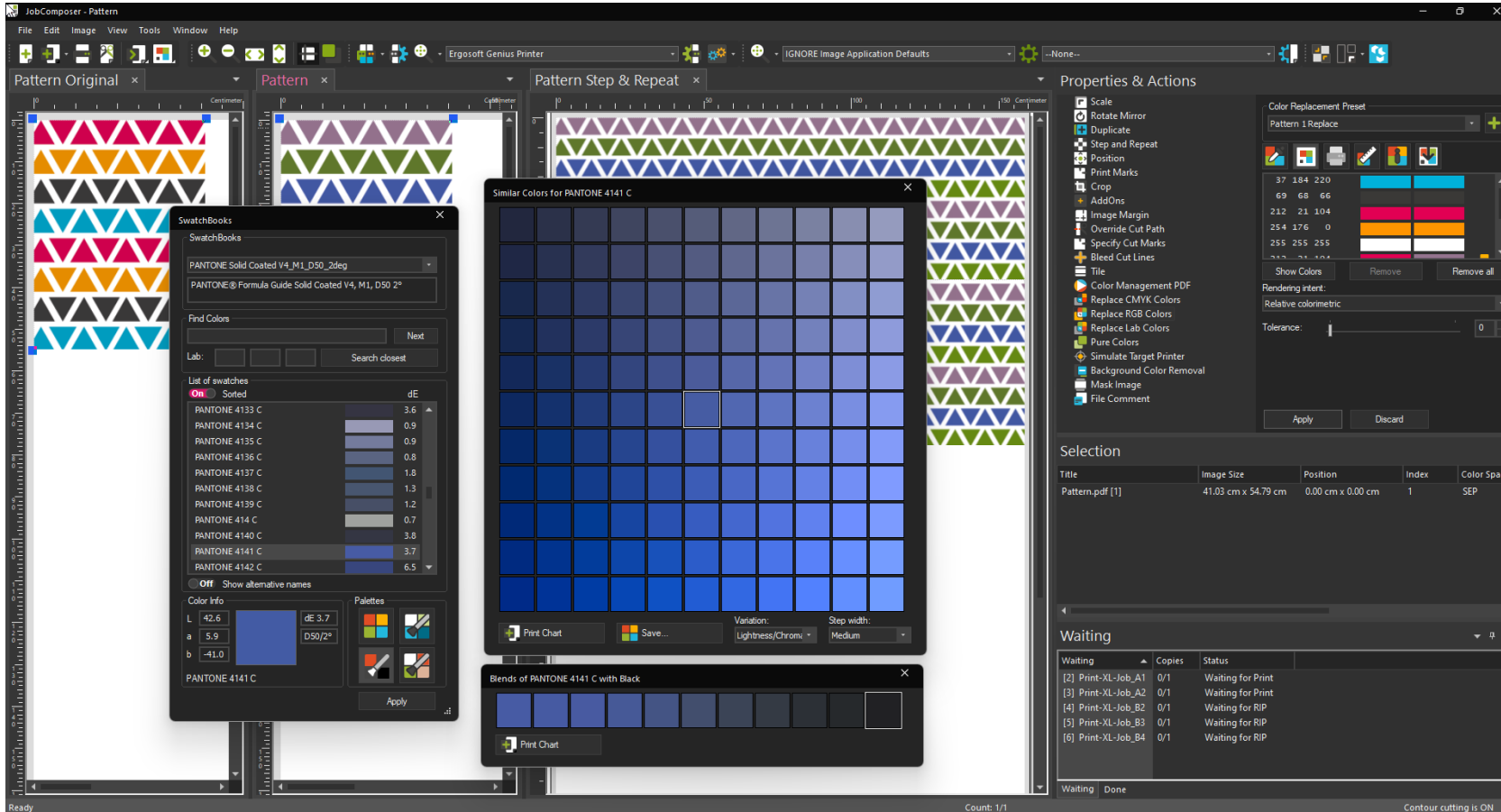
SwatchMaker

You can let Ergosoft calculate the best ink mix for your printer, or override it and set your own using all the inks in the printer including gamut extending and fluorescent colours.



Color Replacement Tools

Ergosoft's color replacement tools can be quickly used to create a range of different colored fashion products from a single design.

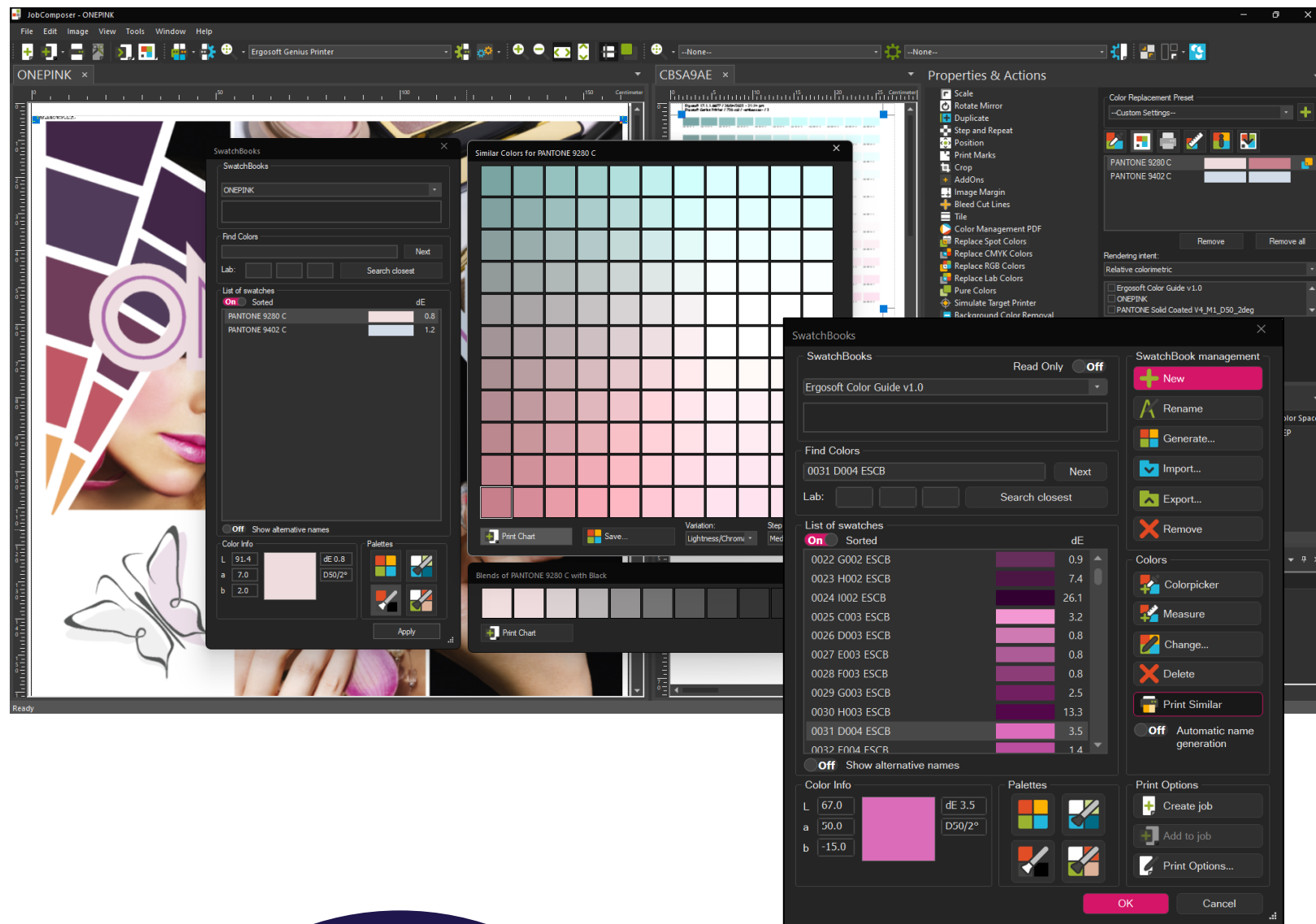


By using print production tools instead of design tools, manual work is kept to a minimum, and these can be saved as presets to be used on new designs in an automated workflow for further time savings.

Color Replacement Tools

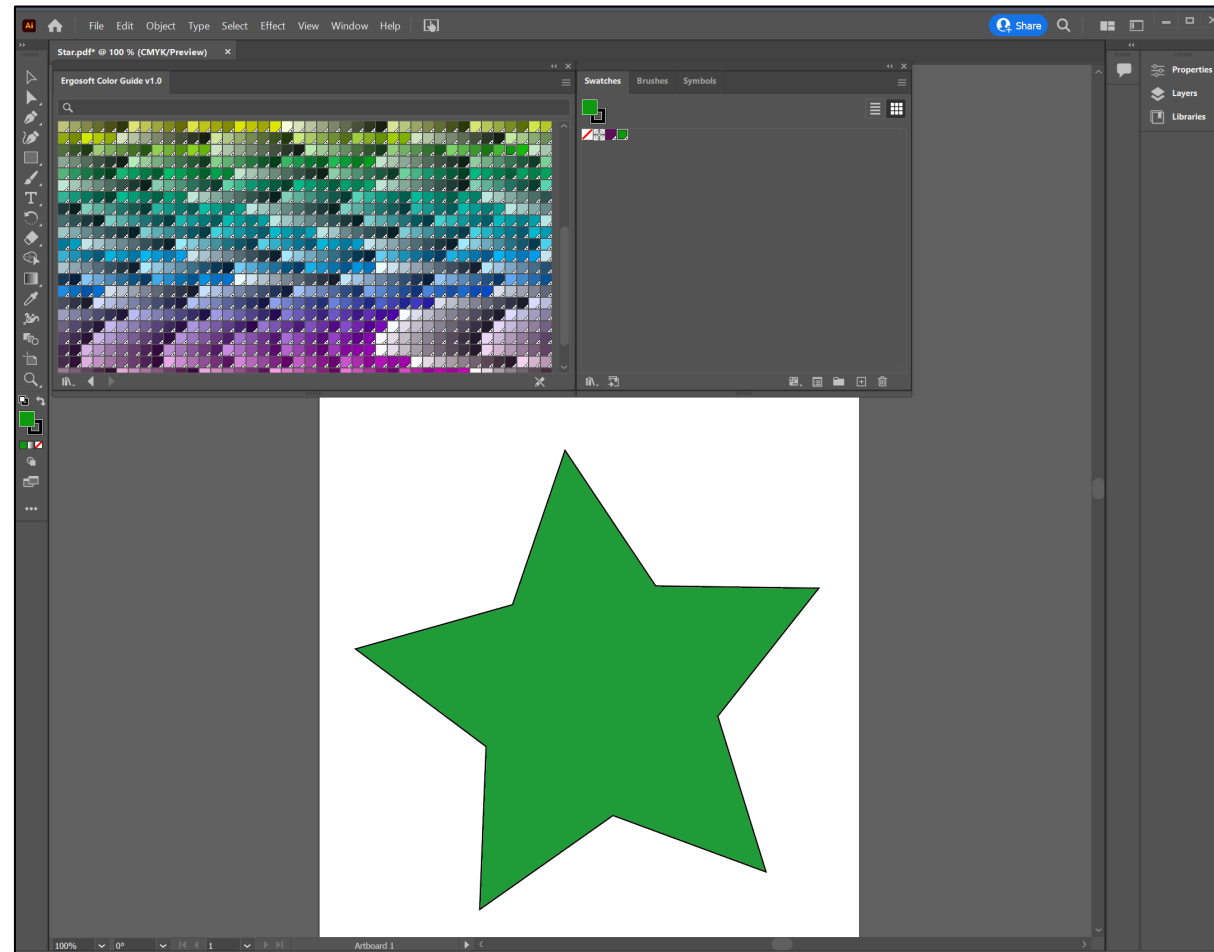
Created for digital textile printing, **Ergosoft's Color Replacement Tools** aid advanced swatch matching, particularly helpful is the 'Print Similar Colors' tool.

Designed to keep color matching time to a minimum, this tool produces customized ranges of colors that can be printed on the fabrics you will use. Checking these against the required color is fast and accurate, creating an absolute match with no mistakes.



Textile Swatch Matching - Using Adobe™ Tools

Ergosoft's **SwatchBook** and **SwatchMaker** tools allow textile printers to export their customised color libraries as Adobe™ compatible swatch libraries for use in Adobe™ Photoshop® and Illustrator®.



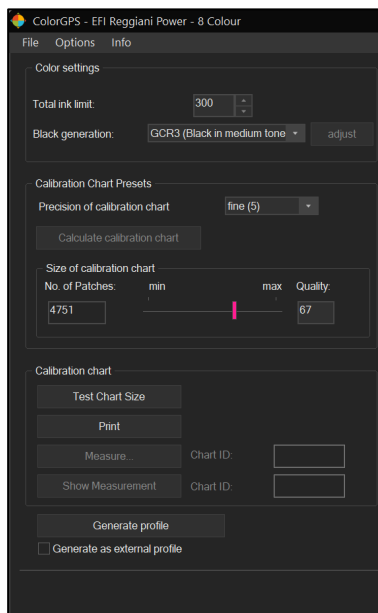
Easily imported, these datasets completely close the loop for anybody designing and digitally printing textile products.

These Swatch libraries are license free, allowing you to share them with your designers or customers alike.

Advanced Profiling Tools

As a true multi-channel ICC profiling system, Ergosoft profiles can contain up to 12 profile channels. The software automatically calculates the best way to create a test chart for printing so that you get the most from your printer. Ergosoft ICC profiles can be exported as RGB soft-proofing profiles for sharing with product designers and remote workers – perfect for modern textile production workflows.

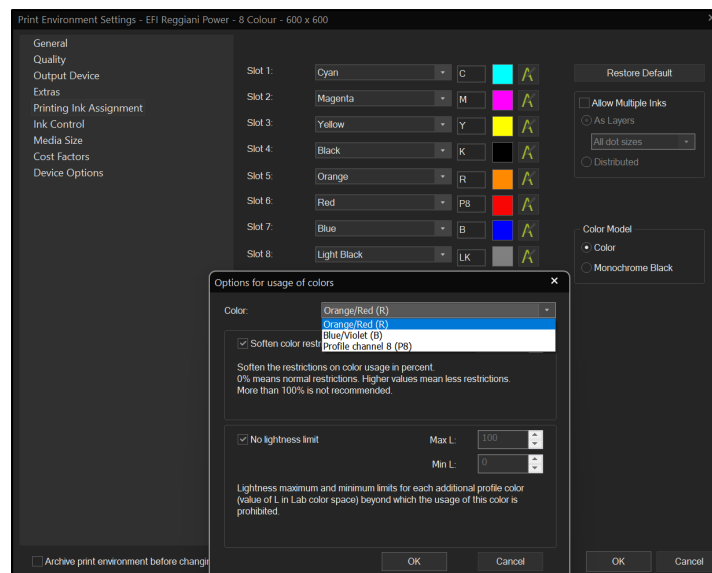
Dynamic Profiling Charts



Profiling charts are calculated dynamically based on how many colors are in the printer and the quality requirement for the application.

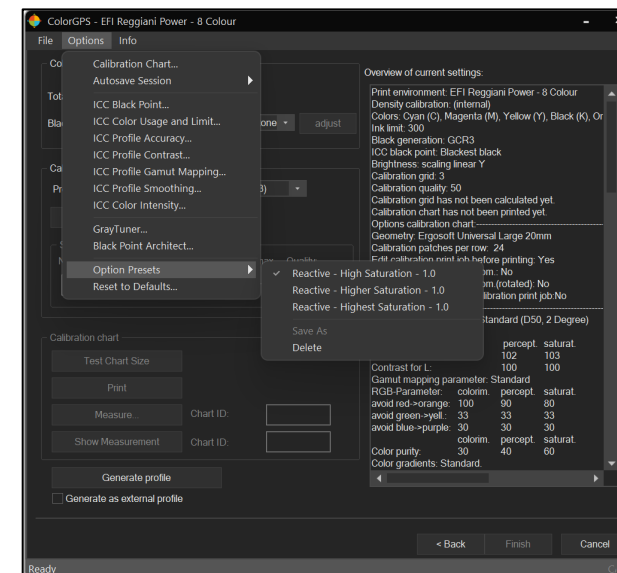
Typical 8 color profiles are calculated with 1500 – 1900 color patches.

Additional Color Channels



Additional color channels can be used to different effects depending on result required. The ICC profiles are linked to printer linearization files so they can be used across a fleet of printers – simply calibrate all your devices to the same standard and use a single ICC profile.

Profiling Presets



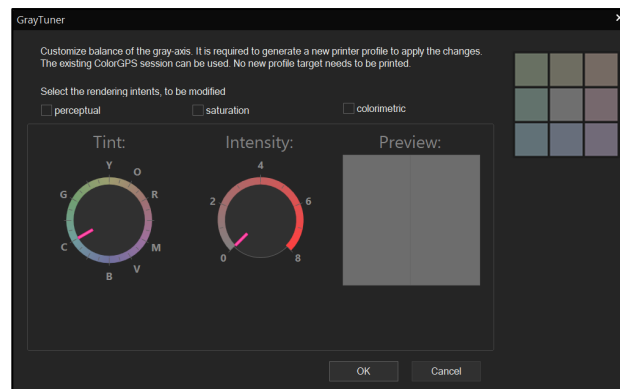
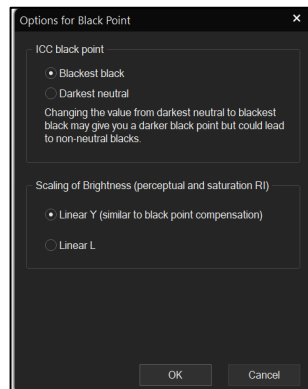
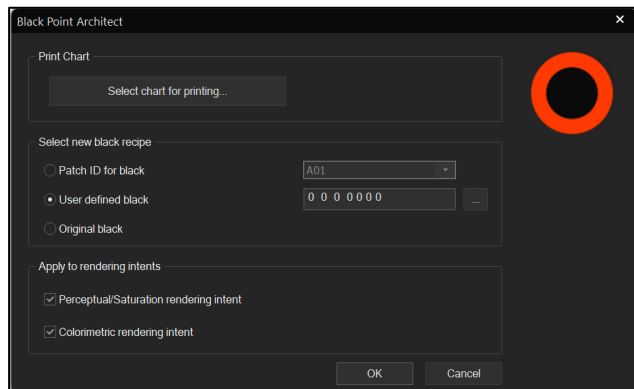
Advanced profiling can lead to parameter-rich settings. These settings can be saved as preset easily, exported, and shared with other stations to ensure color accuracy & appearance consistency across all media profiling sessions or locations.



Advanced Profiling Tools

Ergosoft's unrivaled profiling tools are designed to help customers produce the best-printed results from their systems. These included tools are usually only available in specific, high-end products.

Control Black Channel and Grey Channel behaviour.

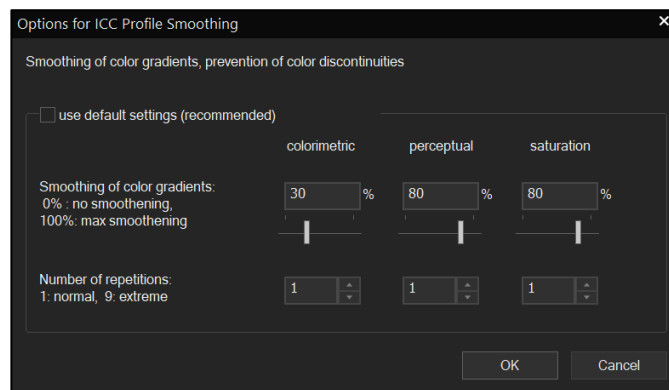
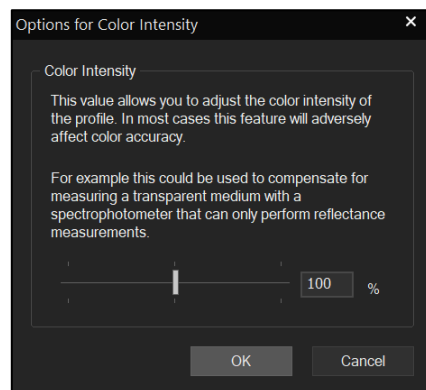
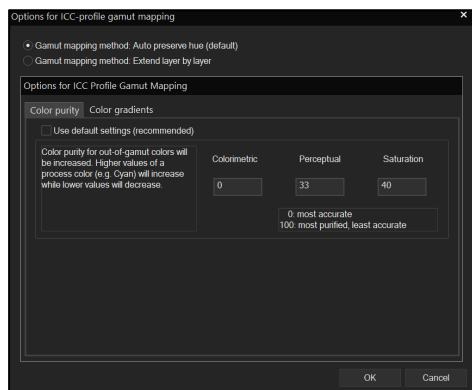


Standard in every Ergosoft Production version are extensive tools to control black channel and grey channel behaviour.

These tools are essential in textile printing applications in order to ensure good grey balance and the preservation of details.

Also, when it comes to color, it's crucial to consider elements like the observer characteristics and light source, including D50/2° or D65/10°. Ergosoft RIP offers these features for graphics and textile/painting standards, respectively. Plus, we make use of real spectral values to ensure accurate color conversions between industry standards. This enables seamless switching between different color standards.

Best-Practive Gamut Mapping, Native Control of any type of additional profile colors , and Color Intensity



When converting from very wide colour gamuts such as RGB to typical textile color spaces then colors are often compressed. In such cases default algorithms can sometimes deliver unwanted results.

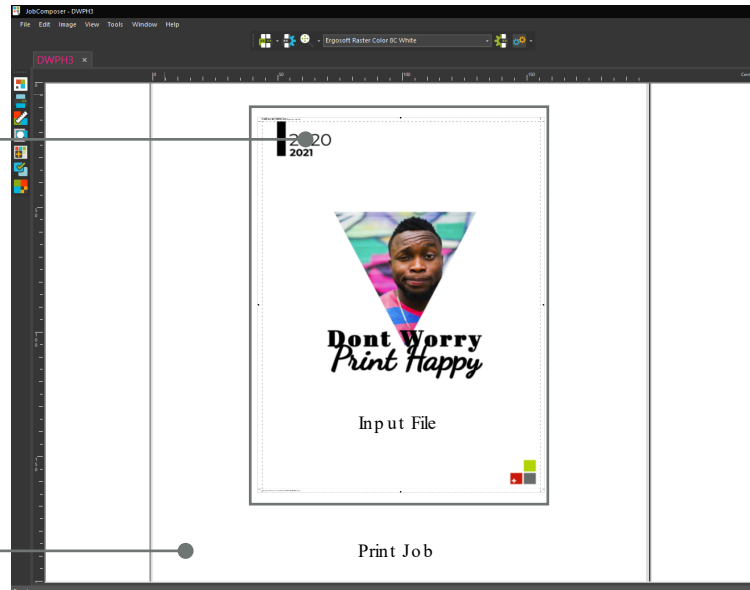
Ergosoft's ColorGPS was designed to allow users to define rules best suited for these color transformations, gamut mapping, profile smoothing and color intensity behaviours can all be edited.

Optionally you can use fluorescent inks as profile colors instead of traditional spot channels. ColorGPS provides native control of any type of additional profile color.



Automate prepress with Presets & Composite Presets

Ergosoft JobComposer



ImagePresets

Save all individual settings of an image as “Presets” and combine them into an “ImagePreset”.

Load the next image, apply the “ImagePreset” and Print!

JobPresets

Save all individual settings of a Job as “Presets” and combine them into a “JobPreset”.

Load the next Job, apply the “JobPreset” and Print!

Composite Preset

Ergosoft enables you to combine ImagePresets and JobPresets into Composite Preset to minimize time spent in individual image editing and preparation.

- Ergosoft allows prepress operators to apply a series of processes (called Properties and Actions) to prepare jobs quickly and efficiently.

In seconds, files can be scaled, cropped, tiled, and nested. Contour-cut paths and bleeds can be created at the click of a mouse.

Actions can be saved for use again and again. We call these Presets.

Ergosoft Presets can be connected for more complete workflows, dramatically reducing manual work.

- Composite Presets allow you to connect a series of Actions into a single process to replicate prepress production.

Scaling, adding seams, eyelets, barcodes, cropping to a pre-defined size, or calculating cut contours are just some of the tasks that can be automated with Ergosoft Composite Presets.

Nest odd-shaped files

Ergosoft JobComposer

The screenshot shows the Ergosoft JobComposer interface. The main workspace displays a grid of blue star-shaped files. A 'True Shape Nesting' dialog box is open, showing a list of files and nesting options. The 'Nesting Options' section includes 'Angles: 90', 'Space: 0.50 cm', and checkboxes for 'Allow objects to be placed on top of white' and 'Fill holes in objects'. The 'Cut Options' section includes 'Add Bleed', 'Add cut lines', 'Distance: 0.20 cm', 'Color Name: Out', and 'Line width: 0.00 cm'. Below the main workspace, two smaller windows show the 'Before' and 'After' nesting results. The 'Before' window shows a grid of stars with significant white space between them. The 'After' window shows the stars tightly packed together, maximizing the use of the media.

Image Size	Position	Index	Color Spa
17.60 cm x 25.00 cm	1.51 cm x 1.51 cm	1	SEP
17.60 cm x 25.00 cm	22.12 cm x 1.51 cm	2	SEP
17.60 cm x 25.00 cm	42.74 cm x 1.51 cm	3	SEP
17.60 cm x 25.00 cm	63.36 cm x 1.51 cm	4	SEP
17.60 cm x 25.00 cm	83.97 cm x 1.51 cm	5	SEP
17.60 cm x 25.00 cm	104.59 cm x 1.51 cm	6	SEP
17.60 cm x 25.00 cm	125.21 cm x 1.51 cm	7	SEP
17.60 cm x 25.00 cm	1.51 cm x 29.52 cm	8	SEP

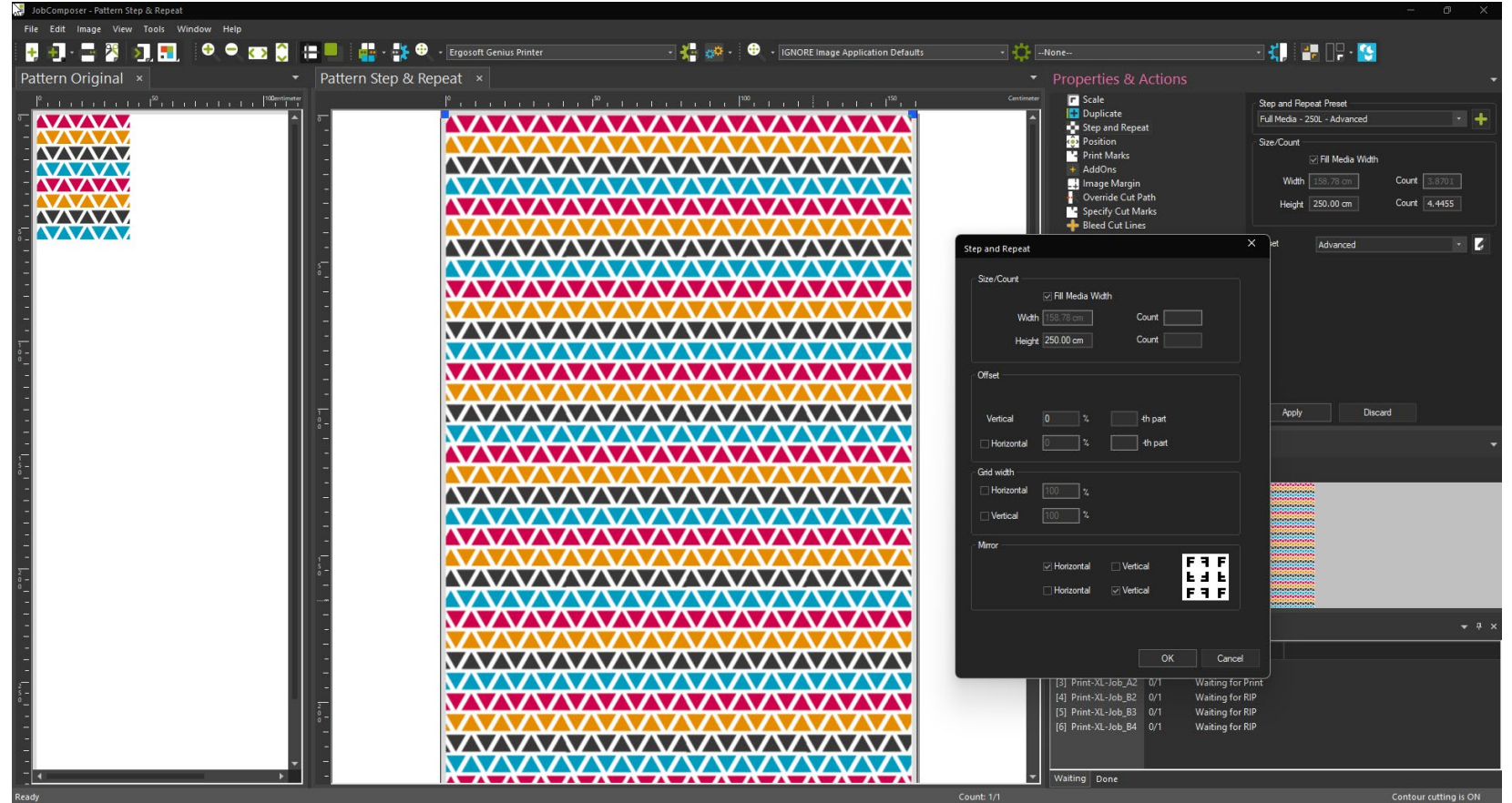
- Ergosoft's true shape nesting analyses the edges of your files and calculates the best way to fit odd-shaped files on your printer, minimizing media waste while maximizing profit margins.
- By incorporating Ergosoft's automatic bleed generation and cut contour functions as part of a Preset workflow, jobs are produced instantly and accurately, saving hours of prepress time.
- Files can be added and nests recalculated as many times as necessary to make sure you use every last centimetre of your media.

Textile Step & Repeat

Designed to reduce the time to prepare artwork files for digital textile printing, the **Step & Repeat** tools in Ergosoft compare to those in desktop textile design applications.

With many different settings for horizontal and vertical offset, and horizontal and vertical mirroring of artwork, layouts for different textile patterns can be quickly viewed with minimal manual effort.

These settings can be saved and used in manual and automated workflows for the fastest production possible.



Color Variants with ColorCombine

The unique built-in architecture ensures a seamless transition from color variants sampling to production printing on any printer of your fleet or any connected station.

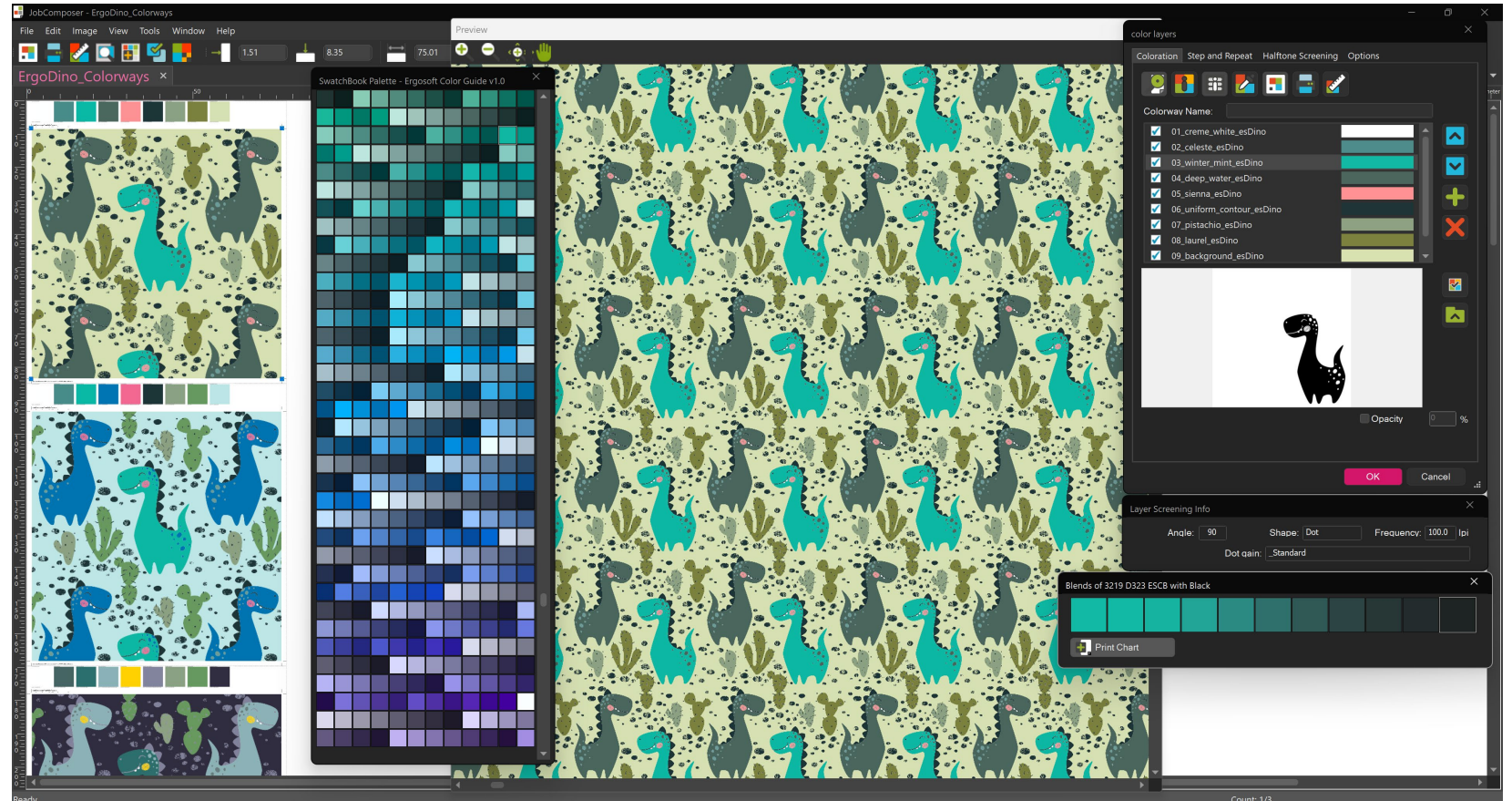
Supported coloring color spaces are spectral, CIELAB D50/2° or D65/10° and any native printer color space (CMYK++) of your device.

Direct access to the company color standards and color books.

Besides the monochrome and colored design channel previews, this embedded ColorCombine module fully benefits from all additional Ergosoft RIP soft-proof features like high-quality printer preview and gamut warning preview as a thematic map.

Reprints, with no room for user error, are made easy through the Archive Job feature of the JobComposer.

Support of the most common file formats of traditional textile designs.



An intuitive user interface including various visual color palettes for efficient coloring of designs.

Includes complete halftone screening, custom dot gain, and ink overprint modules to imitate traditional textile prints' feel or produce high-end simulations for sampling applications.



Full control over your fleet

Ergosoft QueueManager (complete JobQueue)

Custom Filter, Search

Create custom filters and have them available as preset for fast filtering of the complete JobQueue.

Use the text search to find specific jobs easily.

The screenshot displays the Ergosoft QueueManager interface with several panes. On the left, a 'Done' pane shows a list of completed jobs with columns for ID, Name, Copies, Status, and Time. The main area is divided into 'Print' and 'RIP' panes, each containing a list of jobs with columns for ID, Name, Copies, Status, and Printer. On the right, a 'Job Details' pane provides information for a selected job, including its ID, Name, Created time, Owner, Copies, Job Size, Media Size, Print Environment, Printer, Spool File, Status, and Progress. Below this is a 'Job Preview' window showing a printed image of a person's face with the text 'Dont Worry Print Happy'. At the bottom right, a 'Print/CutQueue' pane shows a table of printer queues.

Print/CutQueue	Online	Media	Width	Job	Print Ma
Printer 1	Manual Start		0.00 cm	[57]	TABLET
Printer 2	Manual Start		0.00 cm	[72]	TABLET

JobDetails, Preview

Easily identify a job via preview. Review production details and production journal.

Production Overview

The fully customizable QueueManager allows you to show and filter the complete JobQueue. Manage even large production queues with the tabbed view feature.



